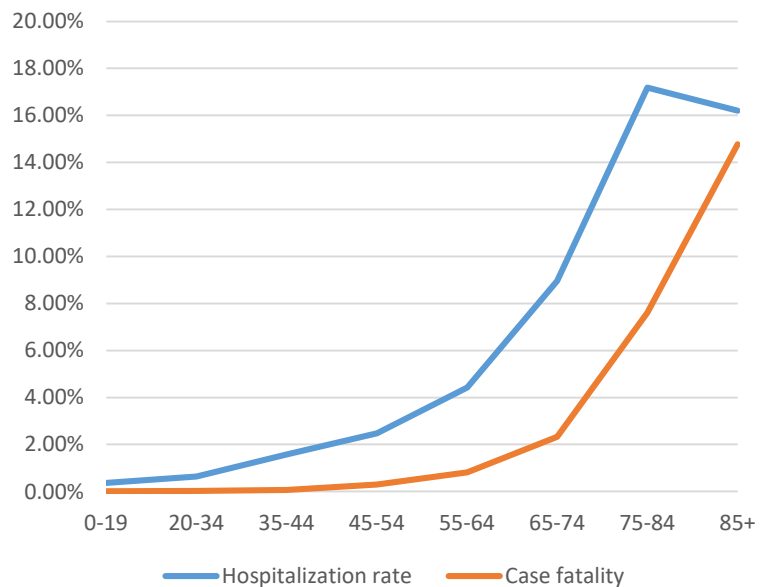


Brotherhood during COVID

J Hejkal
9 Jan, 2021

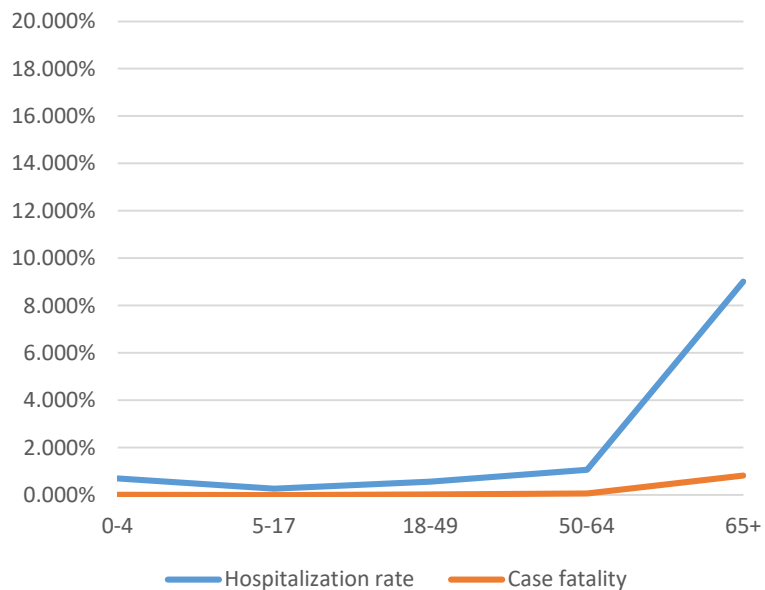
Background

Case fatality and hospitalizations vs age:
COVID



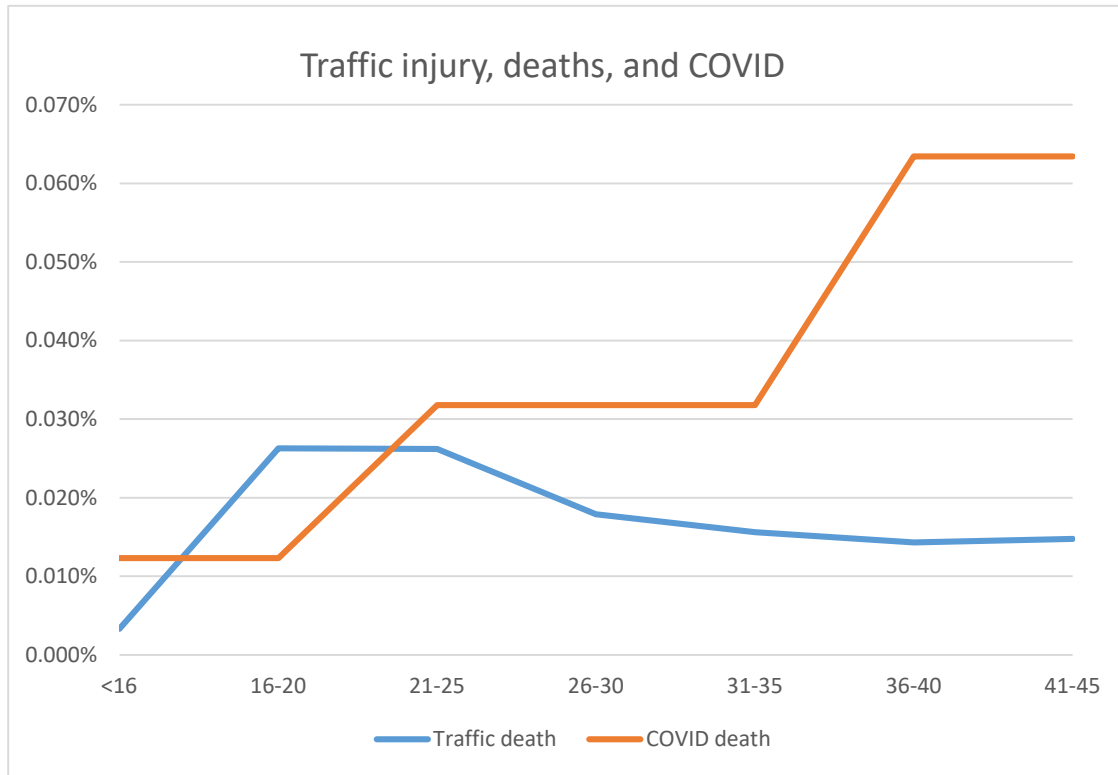
Source: Nebraska DHHS

Case fatality and hospitalizations vs age:
Flu



Source: USA CDC

Low risk in young



Sources: Nebraska DHHS and the National Highway Traffic Safety Administration

Social Brotherhood

- Good Samaritan as model of fraternal charity



Conflict of charitable aims

- “Go and do likewise”
- Avoid “close contact, crowded areas, confined spaces”

Low-risk

- Letters
- Phone calls or video chat
- Drive-byes
- Wear a mask

Make exceptions when needed

- Many needs cannot be met while keeping everything “risk-free”



Temptation to forget neighbor



Who is my neighbor?

- Elderly/isolated

Who is my neighbor?

- Elderly/isolated
- Unemployed

Who is my neighbor?

- Elderly/isolated
- Unemployed
- Fearful

Who is my neighbor?

- Elderly/isolated
- Unemployed
- Fearful
- Angry

Who is my neighbor?

- Elderly/isolated
- Unemployed
- Fearful
- Angry
- Kids

What are we called to?

- Older
- Younger
- With kids

Important Principles

- Do not be afraid!
- Proportionate and disproportionate means to an end